



ATLAS Week Lisbon 2022

Welcome to Lisbon!



Lisbon

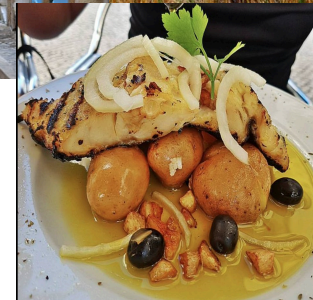
By the Tagus river

Vibrant city, home of traditions, culture and fine cuisine

Close to beautiful beaches

Mild weather in October (average 23°/15°)

- Mostly sunny



Venue location

Central location

- Well communicated by public transport
 - Subway: 50 m, bus: 50 m
- Within walking distance from several hotels
- Close to LIP (5 mins)

Buffet lunch will be provided every day

- Not too many restaurants close by
- Easier/faster

Large space available for coffe breaks and lunches

Large green area outside



Venue — Aula Magna

Main room:

Aula Magna of the University of Lisbon

Satellite rooms for meetings on site or at
LIP (5 mins away)

Wifi:

- Eduroam, University service
- Provides
 - sufficient number of connections
 - support during the event

Ethernet connection for presentations



Social events: welcome drink

Ciência Viva museum

- Dedicated to explaining science for kids

Placed in Parque das Nações

- Ideal for a nice evening walk and dinner around
- Very touristic area



Social events: conference dinner

Thursday evening
Montes Claros restaurant

- In Monsanto, the largest green area in Lisbon
- Transportation by bus provided



Optional social event: Excursion

Half-day guided tour of old town

- The popular districts: Mouraria and Alfama
- The original Lisbon since Roman times – home of artisans, merchants, fishwives and sailors
- Home of Fado and its traditions
- Wednesday 12th
- Price: 30 euros
- More info on web page



Logistics: fees and accommodation

Fees:

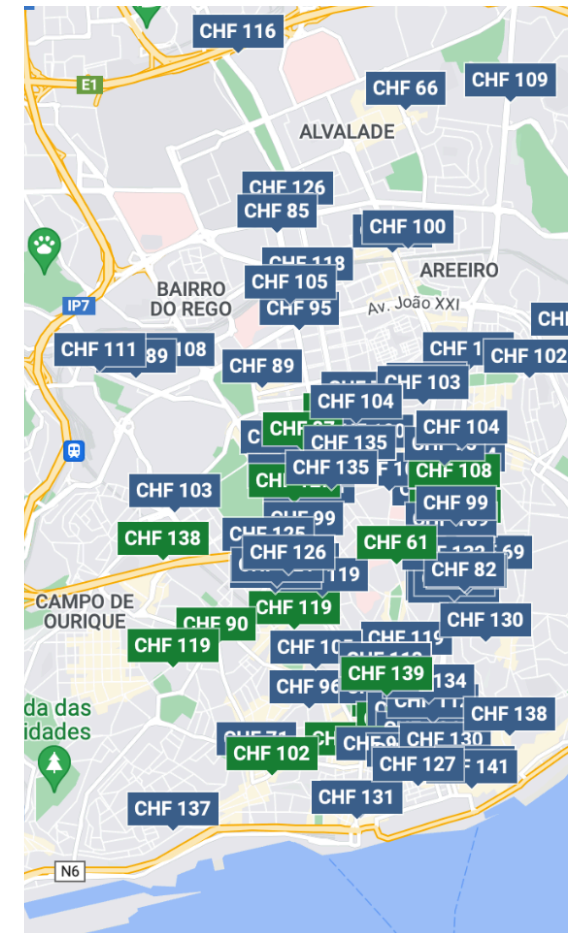
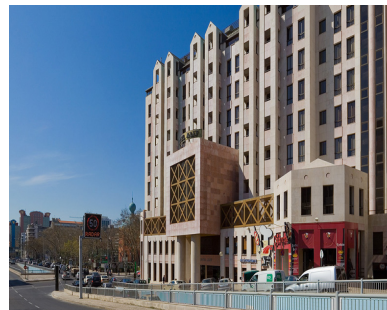
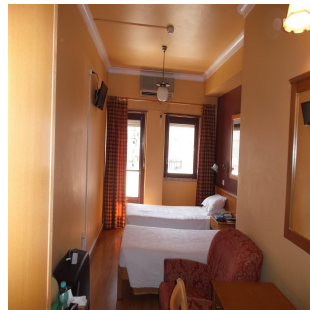
- Regular fee: 380 Eur – 280 Eur for students
- Late fee (15 August): 430 Eur

Fee payment:

- Bank transfer – easiest
- Payment also possible through EventBrite
- Instructions on web page

Accommodation:

- Lots of hotels available – easily reachable by subway
 - Easy to find good accommodation at reasonable price
- Group bookings made for 45 rooms (single and double) in 3 hotels – prices from 50 to 75 Euro
 - All within reasonable walking distance of venue



Logistics: getting to and around Lisbon

Flying to Lisbon:

- Lisbon airport well connected to many capitals in the world
- Typical flight duration from Geneva to Lisbon: 2h 20 min
- Airport very close to the city center and well connected by public transport (bus, subway, taxi)

Easiest is by subway (Metro):

Conference venue is near a subway access
(Cidade Universitaria – Yellow line)

- Accommodation near the Yellow line is easily found
- Subway fee: 1.5 Euro / 1 hour
- 24 h ticket for 6.45 Euro
- Valid for metro and buses

Information on the ATLAS Week page

Taxis are easy and cheap:

- E.g. Airport to centre ~15 - 20 Euro
- But: please make sure taxi meter is running!



<https://www.metrolisboa.pt/en/>



Your hosts: the Portuguese ATLAS Team

National group:

LIP (Lisbon, Coimbra, Minho), FCUL, FCTUC, U. Minho, CFNUL
CEFITEC/UNL, INESC, CFMC, Adl engineers training program



More information:

Web page:

- <https://indico.cern.ch/event/1161009/>

Any questions?

- Contact us at atlasweek.2022@lip.pt



ATLAS EXPERIMENT **LIP** LABORATÓRIO DE INSTRUMENTAÇÃO E FÍSICA EXPERIMENTAL DE PARTÍCULAS partículas e tecnologia **U LISBOA** UNIVERSIDADE DE LISBOA

ATLAS WEEK

LISBON 10–14–OCTOBER—2022

LOCAL ORGANISING COMMITTEE
A. Gomes F. Veloso H. Wolters J. P. Santos N. Antunes P. C. Muirto
A. Maio G. Evans I. Ochoa L. Seabra N. Castro R. Gonçalo
F. Martins H. Santos J. Gentil M. Stolarski O. Janeiro R. Pedro

SECRETARIAT
M. Desnyder-Ivesdal
M. Brasseur
K. Richardson

+INFO 
lip.pt/atlasweek2022



ATLAS WEEK

LISBON 10–14–OCTOBER—2022

LIP
LABORATÓRIO DE INSTRUMENTAÇÃO
E FÍSICA EXPERIMENTAL DE PARTÍCULAS
partículas e tecnologia

ATLAS
EXPERIMENT

Thanks
and...



Acknowledgments:

