



LABORATÓRIO DE INSTRUMENTAÇÃO
E FÍSICA EXPERIMENTAL DE PARTÍCULAS
partículas e tecnologia

[INTO *the* UNKNOWN]



Instructions for use

EDIT IN GOOGLE SLIDES

Click on the button under the presentation preview that says "Use as Google Slides Theme". You will get a copy of this document on your Google Drive and will be able to edit, add or delete slides. You have to be signed in to your Google account.

EDIT IN POWERPOINT®

Click on the button under the presentation preview that says "Download as PowerPoint template". You will get a .pptx file that you can edit in PowerPoint. Remember to download and install the fonts used in this presentation (you'll find the links to the font files needed in the [Presentation design slide](#))

More info on how to use this template at web.lip.pt/help-use-presentation-template

This template is free to use under [Creative Commons Attribution license](#). You can keep the Credits slide or mention LIP and other resources used in a slide footer.



Hello!

I am H...

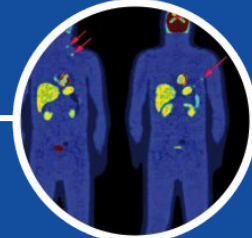
I am here because I love to give presentations.

You can find me at username@lip.pt

1.

Transition headline

Let's start with the first set of slides



1.

Transition headline (regular)

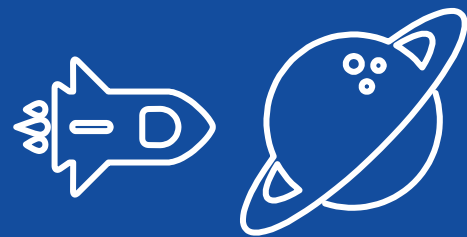
Let's start with the first set of slides

“ *Quotations are commonly printed as a means of inspiration and to invoke philosophical thoughts from the reader.*

This is a slide title

- Here you have a list of items
- And some text
- But remember not to overload your slides with content

Your audience will listen to you or read the content, but won't do both.



BIG CONCEPT

Bring the attention of your audience over a key concept using icons or illustrations

You can also split your content

White

Is the color of milk and fresh snow, the color produced by the combination of all the colors of the visible spectrum.

Black

Is the color of coal, ebony, and of outer space. It is the darkest color, the result of the absence of or complete absorption of light.

In two or three columns

Yellow

Is the color of gold, butter and ripe lemons. In the spectrum of visible light, yellow is found between green and orange.

Blue

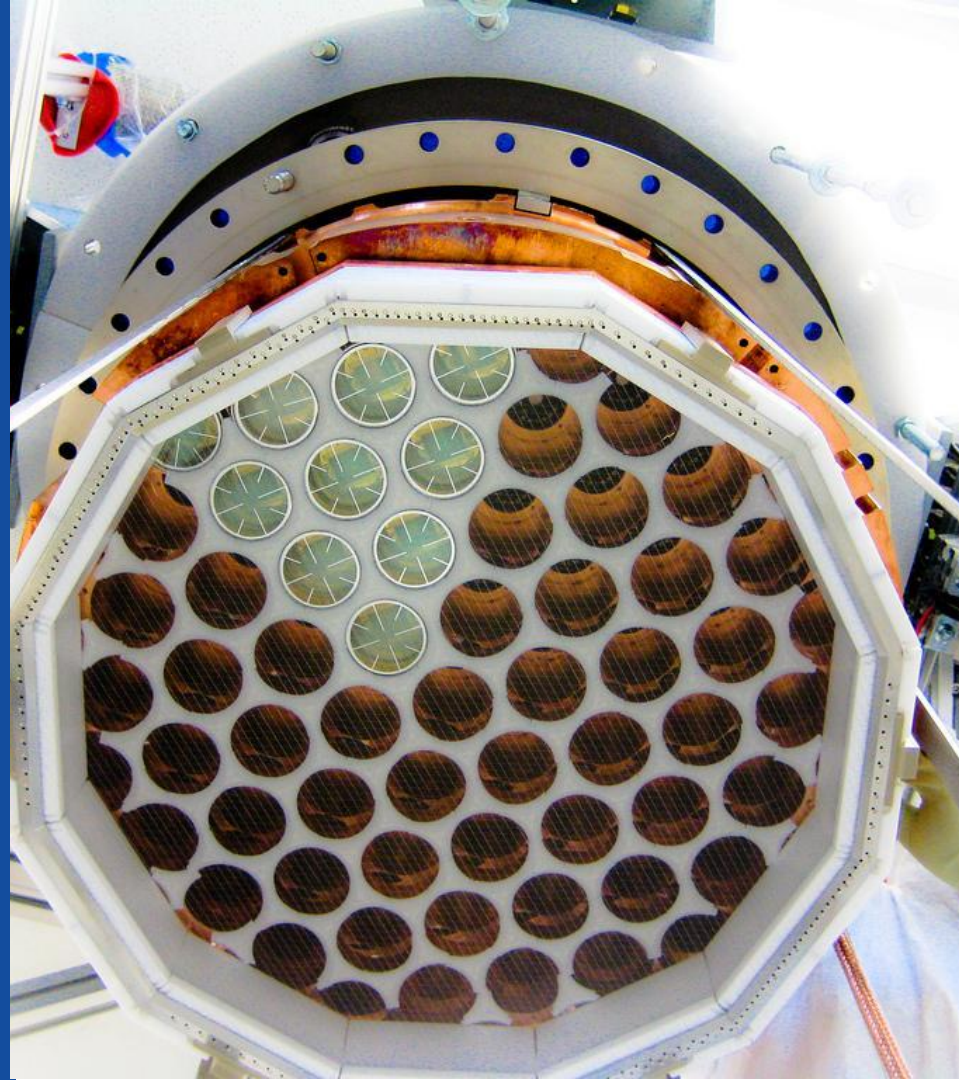
Is the colour of the clear sky and the deep sea. It is located between violet and green on the optical spectrum.

Red

Is the color of blood, and because of this it has historically been associated with sacrifice, danger and courage.

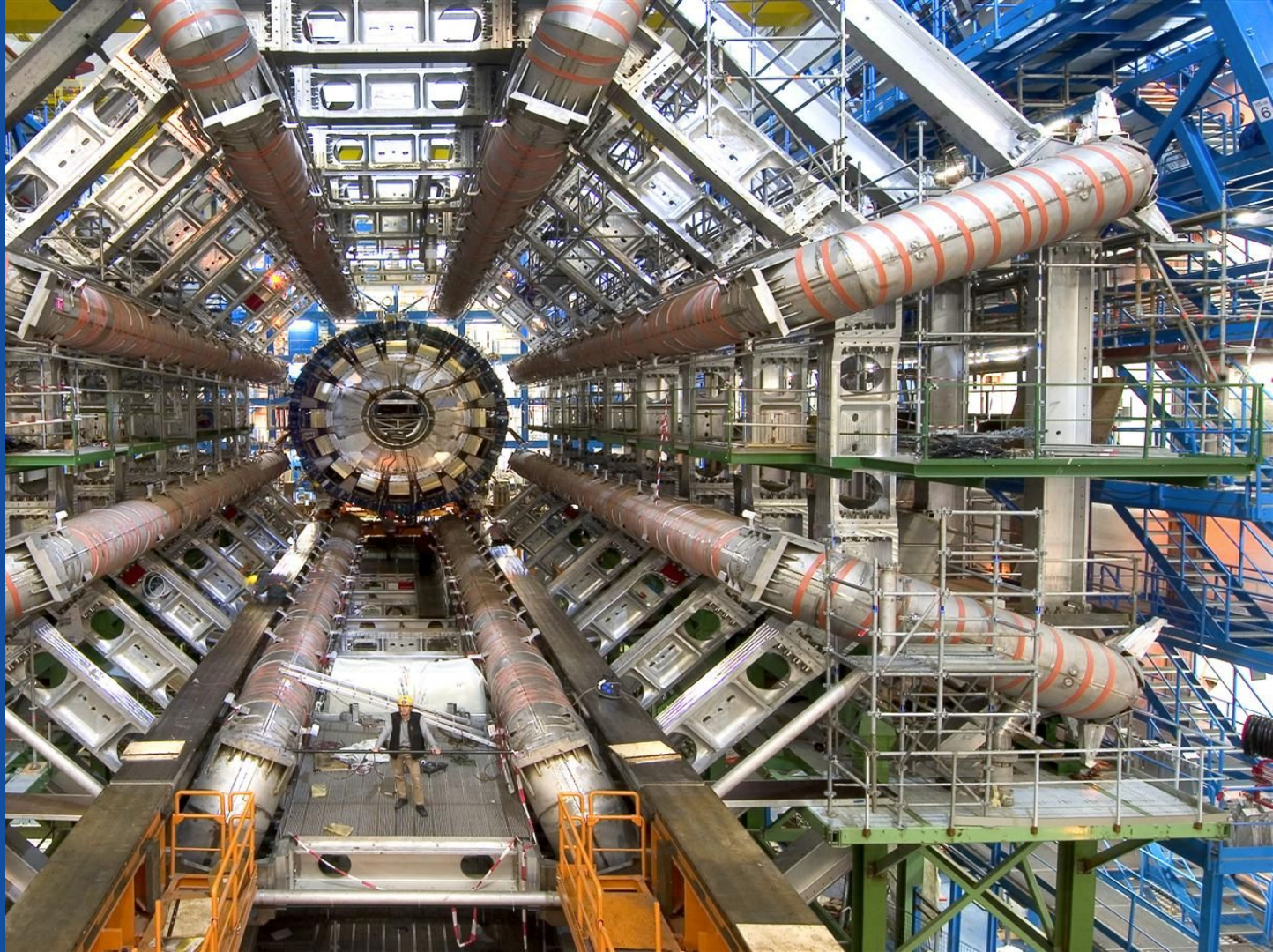
A picture is worth a thousand words

A complex idea can be conveyed with just a single still image, namely making it possible to absorb large amounts of data quickly.

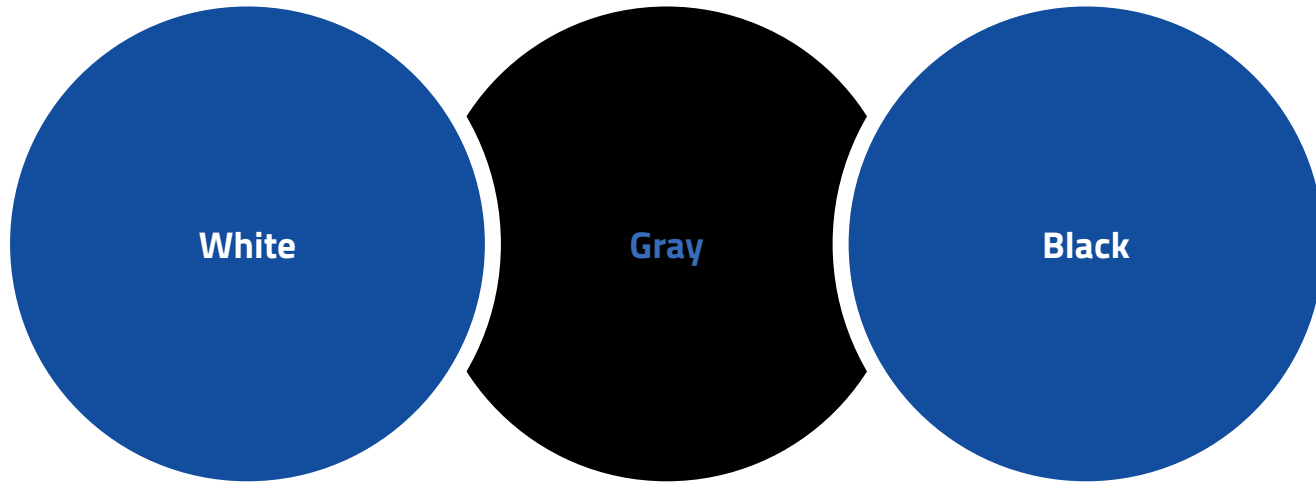


Want big
impact?

Use big
image.

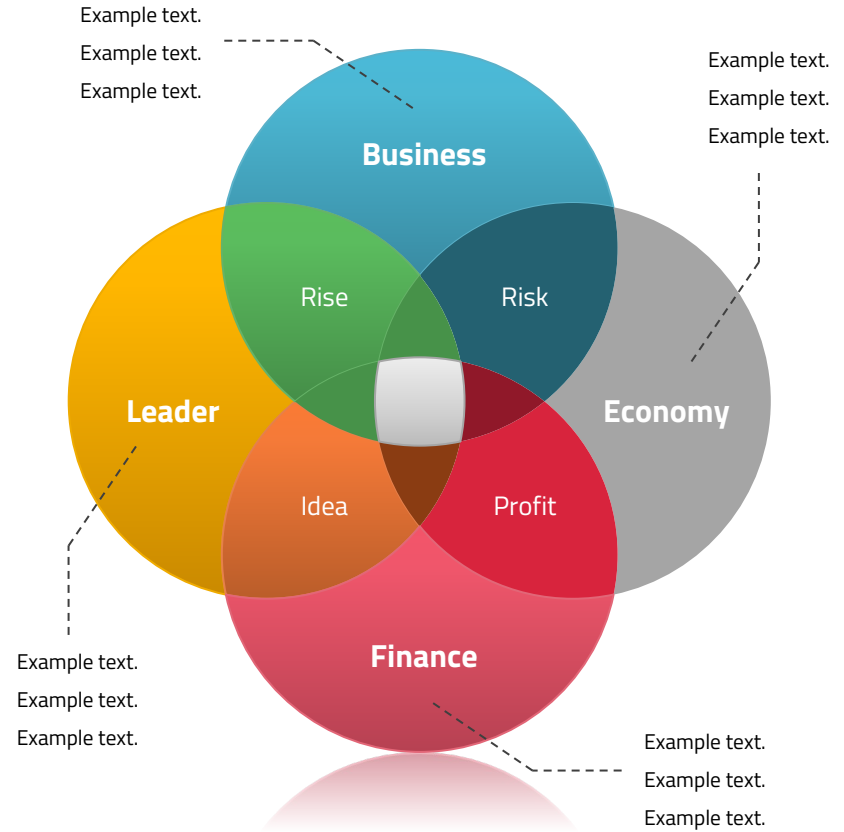


Use charts to explain your ideas



Or use diagrams to explain complex ideas

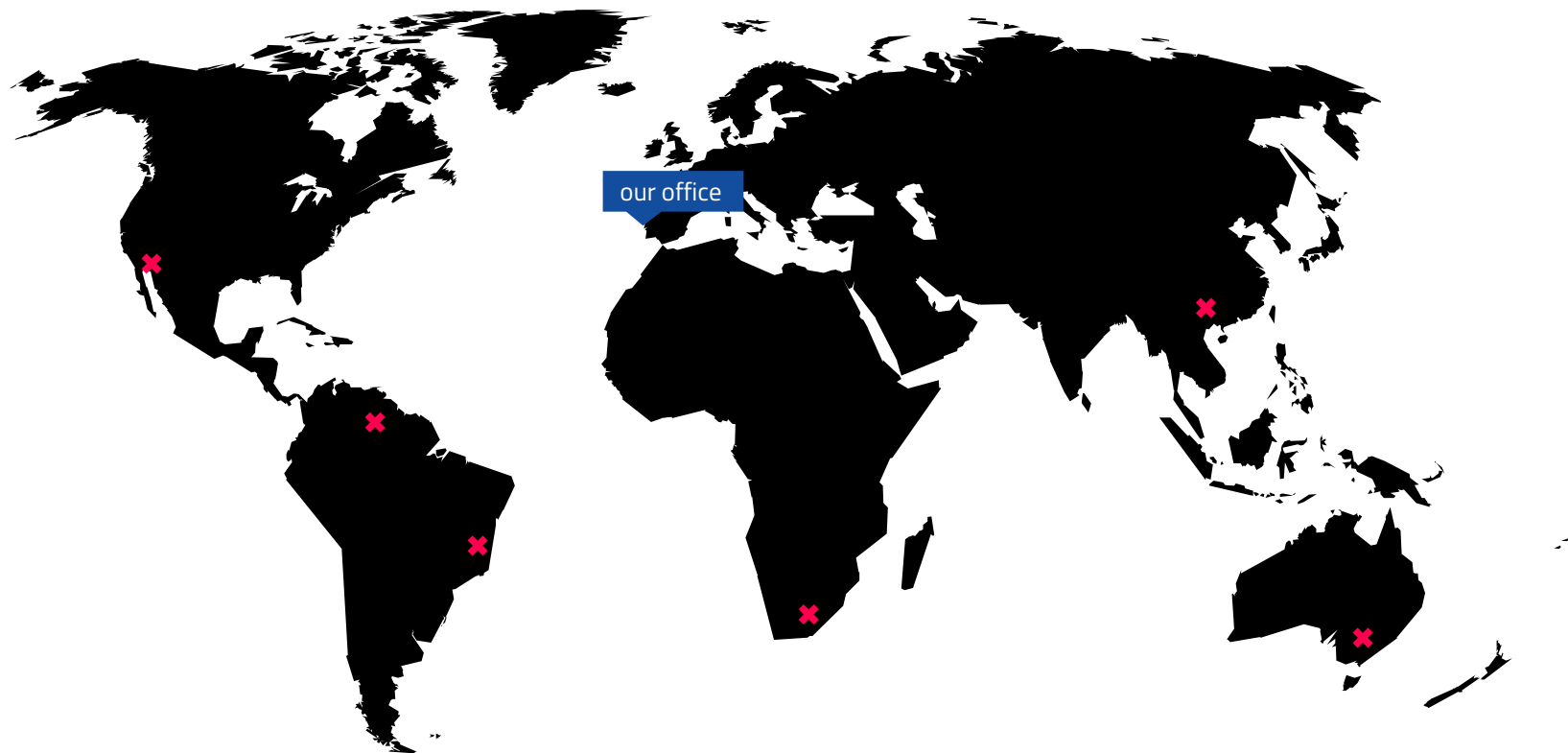
do you have any footnotes?
Just let them here...



And tables to compare data

	A	B	C
Yellow	10	20	7
Blue	30	15	10
Orange	5	24	16

Maps



89,526,124

Whoa! That's a big number, aren't you proud?

89,526,124\$

That's a lot of money

185,244 users

And a lot of users

100%

Total success!

Our process is easy



Let's review some concepts

Yellow

Is the color of gold, butter and ripe lemons. In the spectrum of visible light, yellow is found between green and orange.

Blue

Is the colour of the clear sky and the deep sea. It is located between violet and green on the optical spectrum.

Red

Is the color of blood, and because of this it has historically been associated with sacrifice, danger and courage.

Yellow

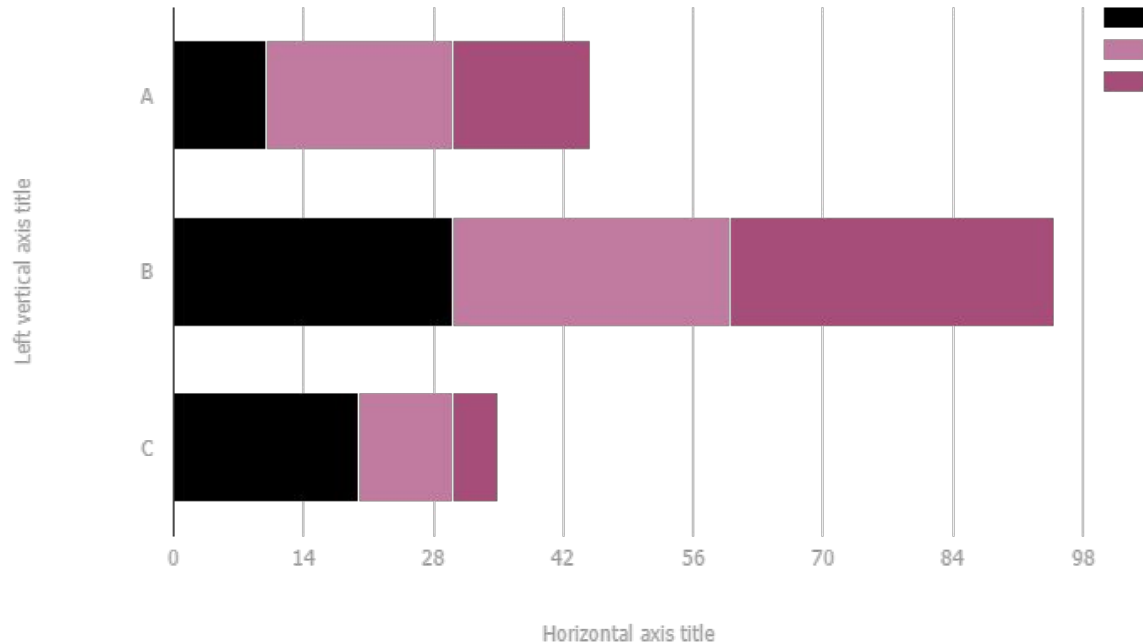
Is the color of gold, butter and ripe lemons. In the spectrum of visible light, yellow is found between green and orange.

Blue

Is the colour of the clear sky and the deep sea. It is located between violet and green on the optical spectrum.

Red

Is the color of blood, and because of this it has historically been associated with sacrifice, danger and courage.



You can copy & paste graphs
from [Google Sheets](#)

| Name project

Show and explain your projects using these templates.



Thanks!!

Any questions?

You can find me at @username &
user@mail.me

Support slides

The next slides are just to help you in the process of design:

- Presentation design guide (Font used, colors and icons)

Presentation design

This presentation uses the following typographies and colors:

- Titles: Titillium web
- Body copy: Titillium web

You can download the fonts on this page:

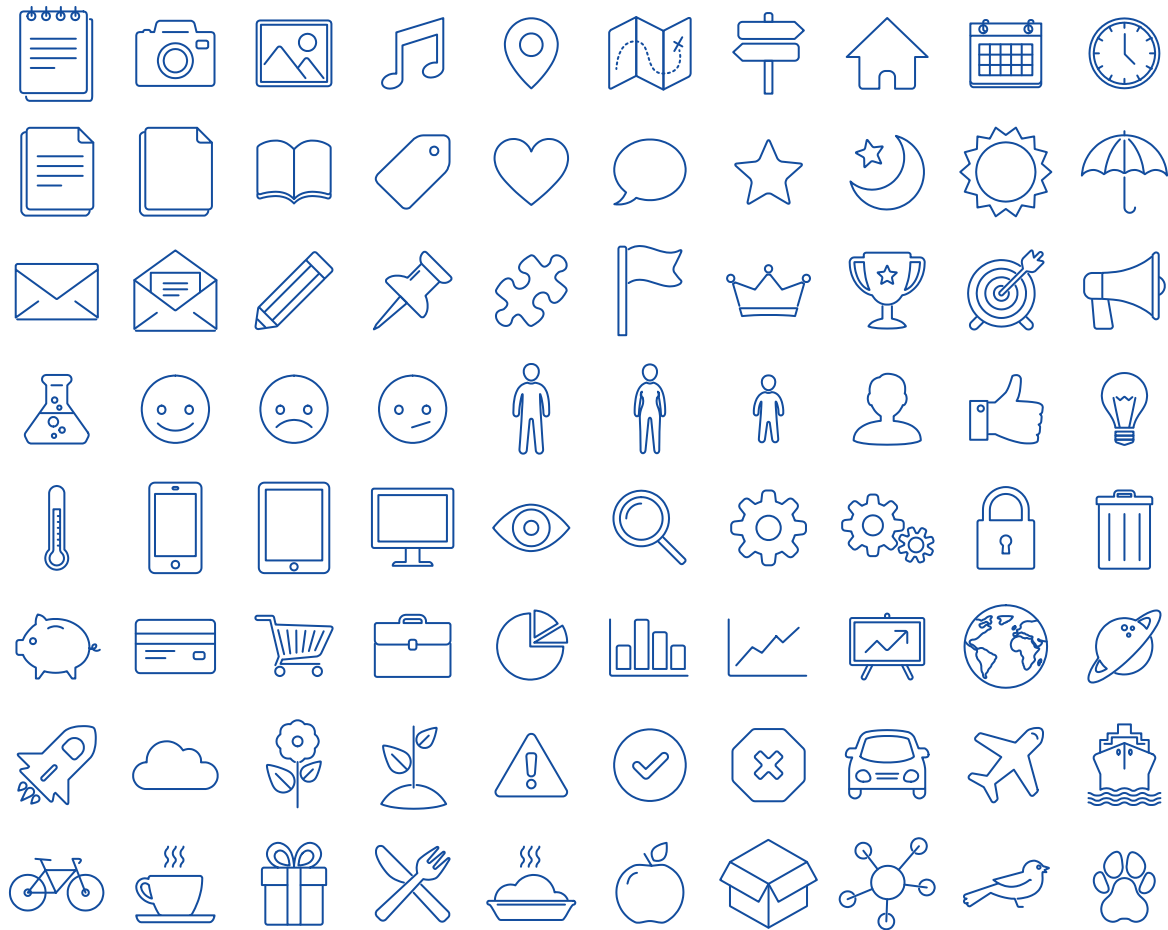
<https://www.google.com/fonts#UsePlace:use/Collection:Titillium+Web:400,400italic,700,700italic>

Click on the “arrow button” that appears on the top right

- Black **#000000**
- Blue **#134d9e**



You don't need to keep this slide in your presentation. It's only here to serve you as a design guide if you need to create new slides or download the fonts to edit the presentation in PowerPoint®



The icons are editable shapes.

This means that you can:

- Resize them without losing quality.
- Change line color, width and style.

Isn't that nice? :)

Examples:

