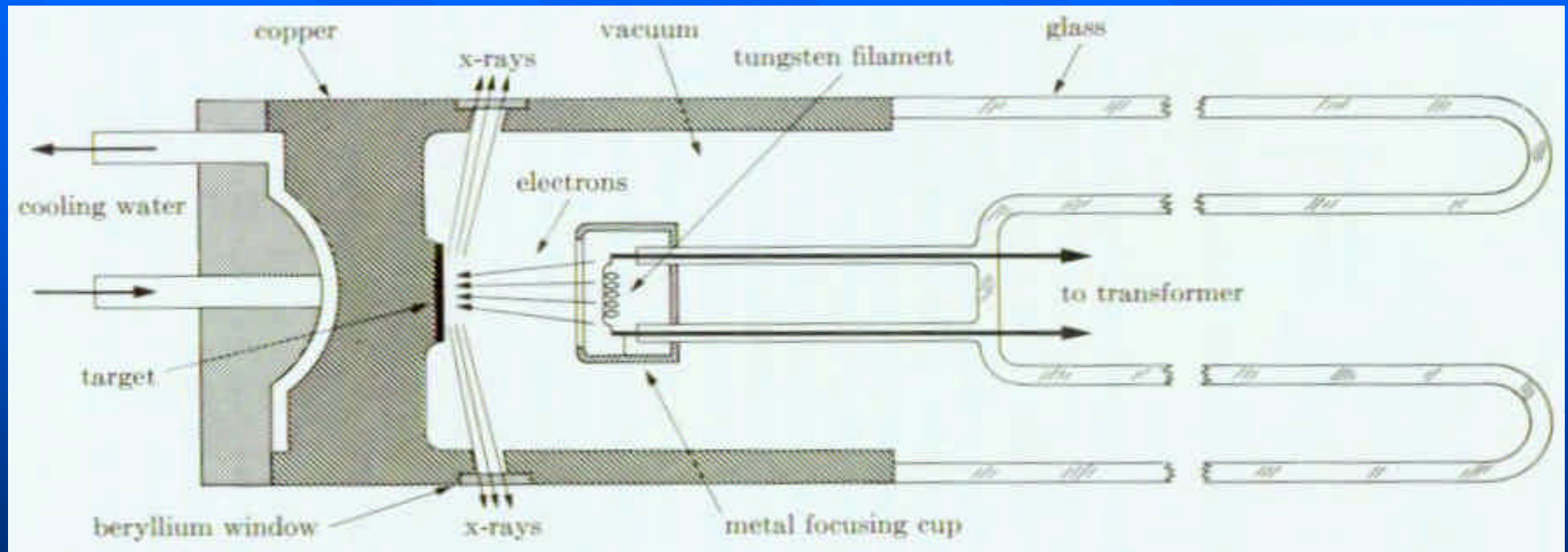
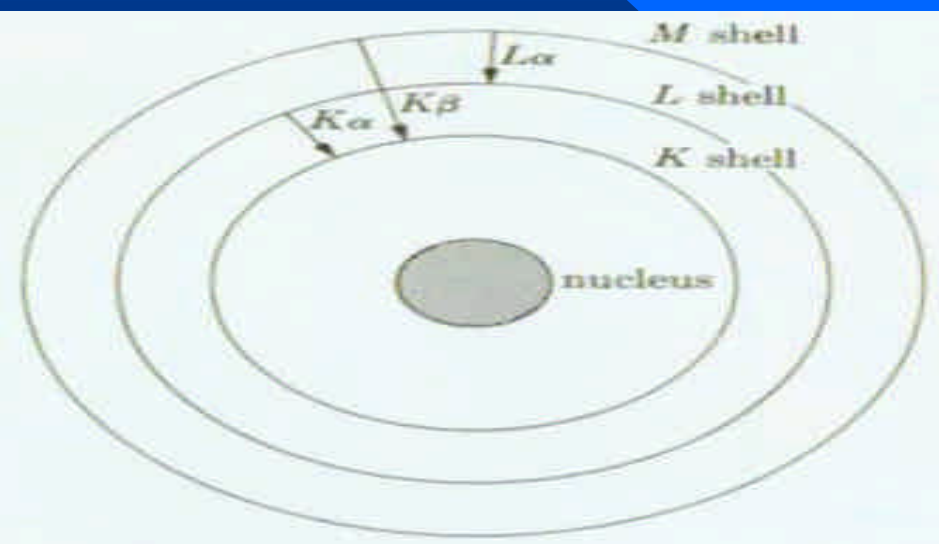
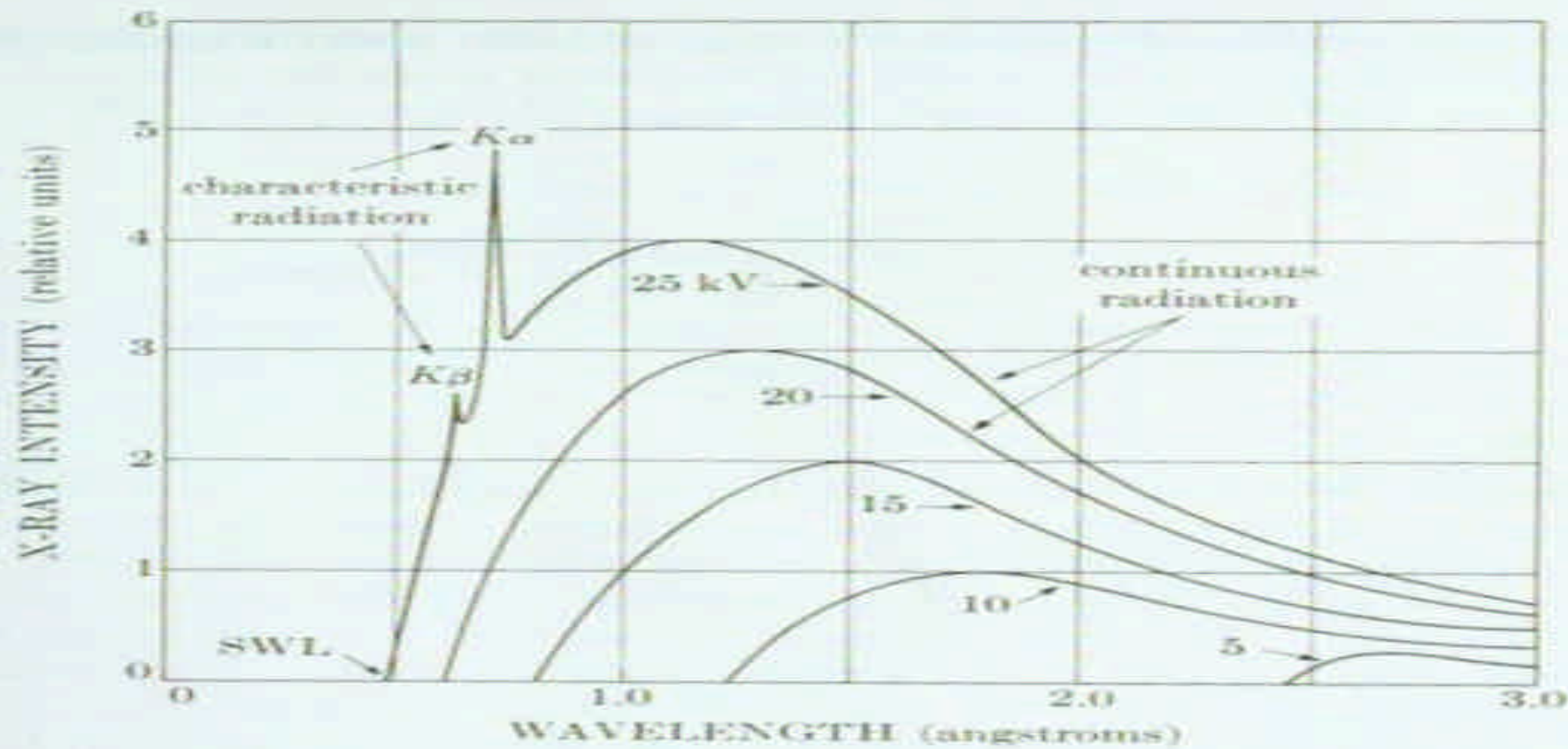


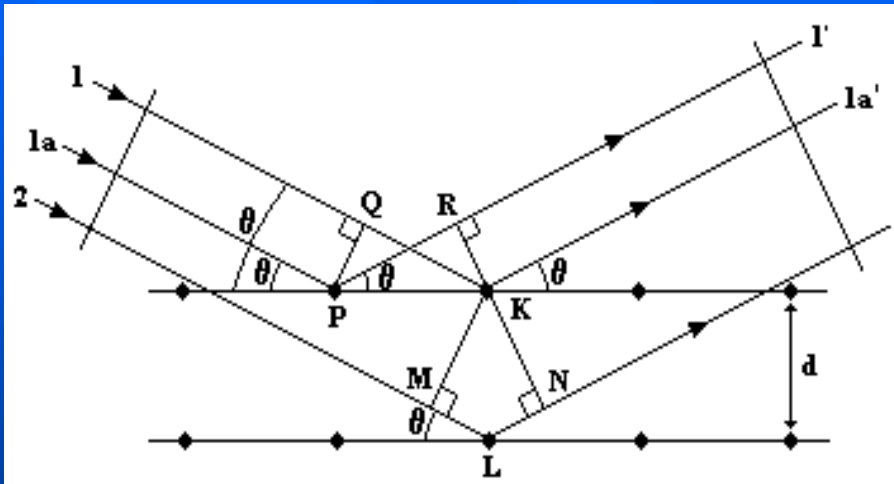
- Como são produzidos?



Ampola de Raios-X



$$eV = h\nu_{\max} = \frac{hc}{\lambda_{\min}} \Rightarrow \lambda_{\min} = \frac{hc}{eV}$$

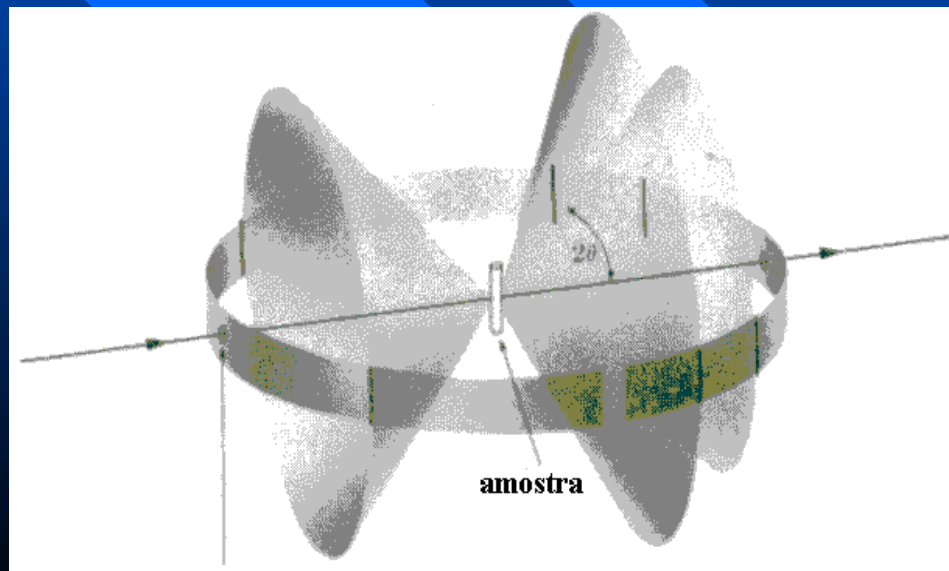
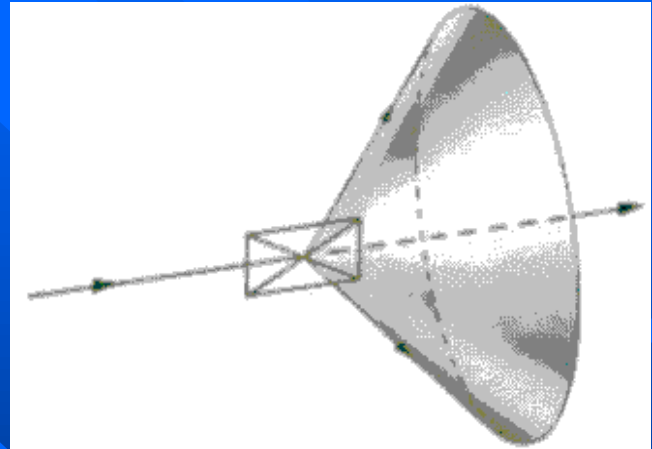
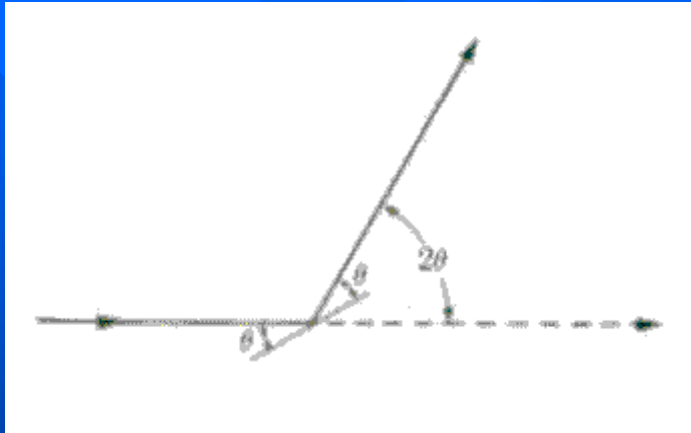
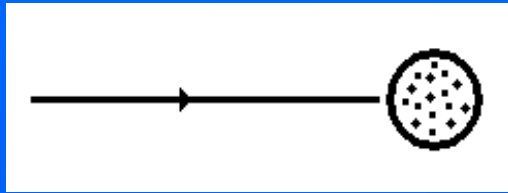


- $QK - PR = PK \cos \theta - PK \cos \theta = 0$

- $ML + LN = d \cdot \text{sen} \theta - d \cdot \text{sen} \theta = n \lambda$

$$n \lambda = 2d \cdot \text{sen} \theta$$

→ Lei de Bragg



Espectro de difracção

